



The first convoy of five trucks leaves from Burke headquarters headed for New York.

## Helping Out in the Wake of Superstorm Sandy

*Burke helps fuel emergency vehicles and generators in the disaster areas*

By Ed Burke, Dennis K. Burke Inc.

**WEEKS AFTER SUPERSTORM SANDY DEVASTATED** parts of New York and New Jersey, restoration has become the new normal for many residents, businesses and government offices there.

Cleanup continues, the power is back, and for many storm-ravaged neighborhoods, the long road to rebuilding has begun.

Just days after Sandy slammed the East Coast, assistance was arriving from across the country to help the battered area get back on its feet. The widespread power outages left many residents cold and in the dark. A second major storm brought whipping winds and record snowfalls, further hampering utility workers and adding hundreds of thousands of homes left without power.

### DELIVERING TO THE DISASTER AREAS

Initially, Burke started sending fuel trucks to support the utility vehicles traveling to some of the worst hit areas of New York. Two days after the storm, Burke

sent five more trailers of fuel to join the caravans of utility trucks heading towards New York.

Just as the fuel distributor's trucks were arriving in New York, FEMA officials were asking Burke if they could help by bringing in fuel for the army of emergency vehicles that were brought in to help with relief efforts to the ravaged areas.

Burke has decades of working with utility companies in rough weather. During bad storms, the fuel company often sends trucks to fuel the utility vehicles and tree-cutters' trucks while they're parked and out of service.

The company also offers its customers an emergency generator program, where they check the generator's fuel status and guarantee emergency fuel deliveries in the New England area.

With terminal position in eight states across the Northeast and Mid-Atlantic region, the company is contracted to provide emergency refueling services for FEMA in 14 states.

### SLEEPING IN TRUCKS

As trucks arrived, they began fueling mobile command centers, light towers in various staging areas, and of course, generators. Fuel was needed for National Guard and Army vehicles, as well as the various power company line trucks and tree crews coming in to assist in the area.

As equipment and resources began to arrive on scene, they needed fuel for generators and heaters in the makeshift tent cities and staging area kitchens.

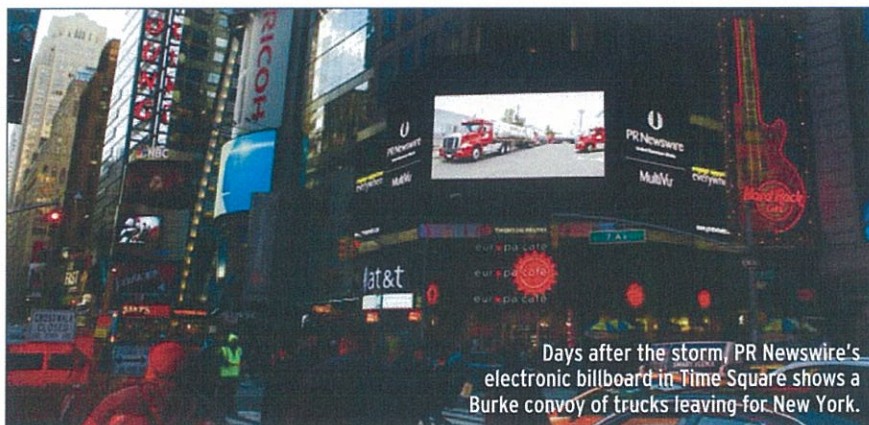
Working long hours, without any place to stay for miles, many of the drivers spent a few nights sleeping in their trucks. In the aftermath of the storm, Burke continued to send trucks of fuel every day for two weeks.

Burke fueled generators to power local police department command centers and vehicles, as well as generators brought in to power a local housing complex.

Gasoline went to JFK, LaGuardia, and Newark Airports, to various airlines for their emergency and ground equipment. At one major oil terminal, Burke fueled a generator that helped get them back online too.

With the storms over and recovery efforts underway, fuel was needed in the heavily flooded areas for the dewatering pumps to clear flooded subways, underground parking garages, and basements.

As the people of these hard hit areas attempt to return to normal, and most vowing to stay, it's neighbors helping neighbors now. We're proud to have played a role in helping with their recovery, and our hearts and prayers go with these families as they begin to rebuild their lives again. ☐



Days after the storm, PR Newswire's electronic billboard in Times Square shows a Burke convoy of trucks leaving for New York.